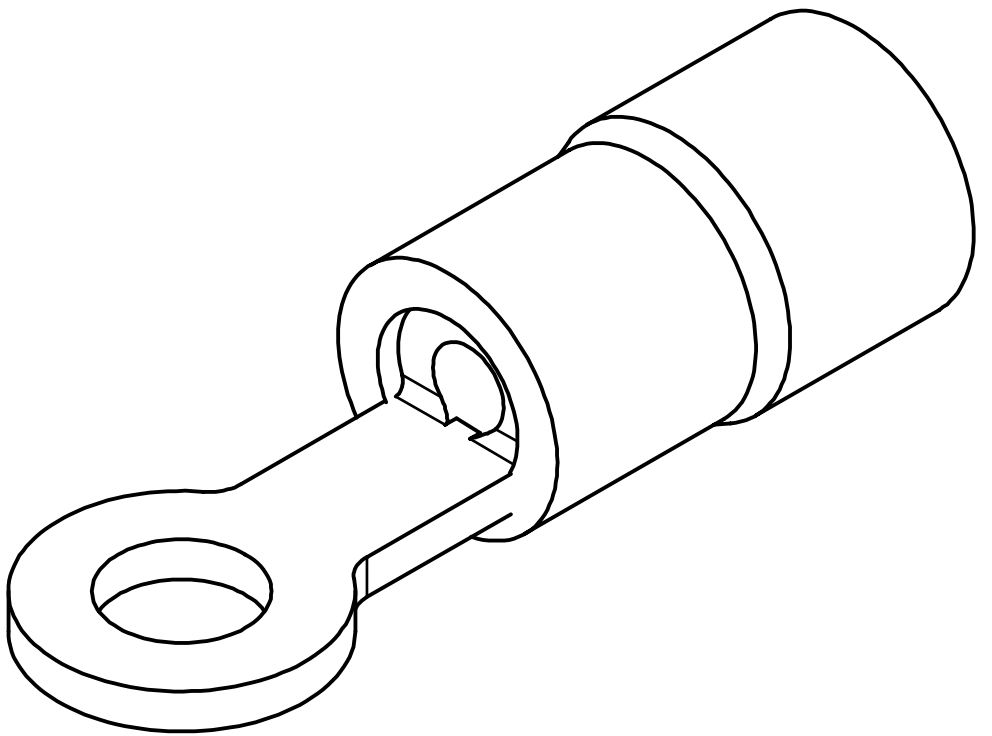
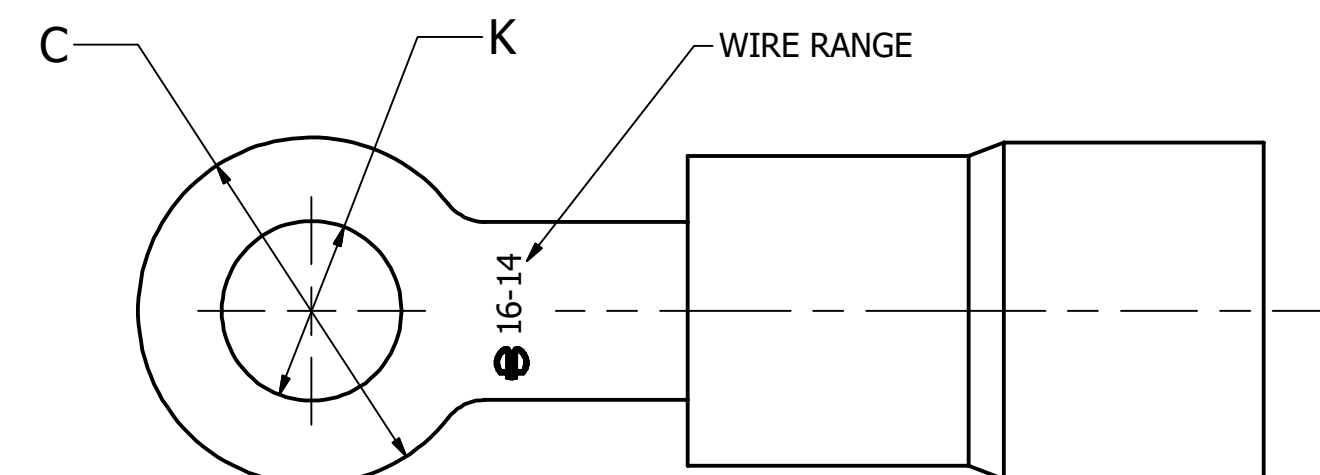
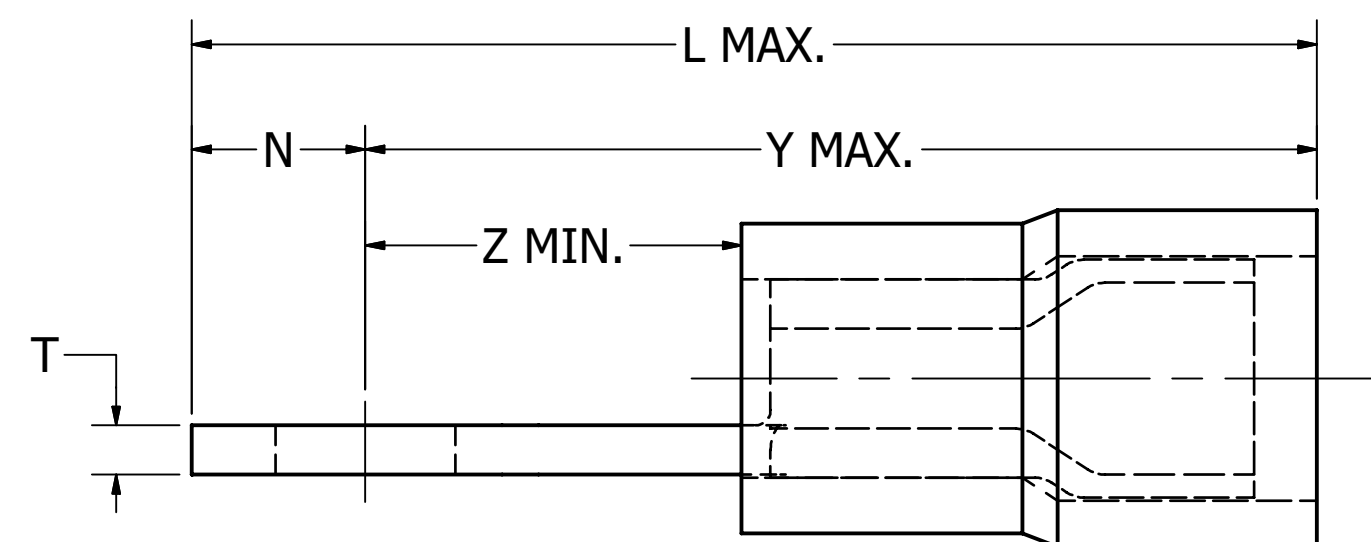


AWG WIRE SIZE (METRIC SIZE)	STUD SIZE	CATALOG NUMBER	BULK CATALOG NUMBER	AS25036 DASH NO.	SAE CLASS #		C		K		L MAX.	N		T ± .01 [± 0.25]	Y MAX.	Z MIN.	MAX WIRE INSUL. DIA. ACCOM.	WIRE STRIP LENGTH ± .03 [± .8]	COLOR CODE	INSTALLATION TOOLING (ONE CRIMP)
					1	2	MAX.	MIN.	MAX.	MIN.		MAX.	MIN.							
22-18 Str. and Sol. (0.34mm ² - 0.75mm ²)	4	TN184	YAES18N48	148	X	X	.23 [5.8]	.22 [5.7]	.12 [3.0]	.11 [2.8]	.74 [18.8]	.11 [2.9]	.11 [2.8]	.03 [8]	.63 [16.0]	.23 [5.7]	.12 [3.0]	7/32" [5.6]	RED	Y6NCP1 [J1022NC3], Y6NCB [J1022NC3], Y10D, Y1022, MRE1022NV, MR18 (MR18 is only for stranded wire)
	6	TN186	YAES18N1	101	X	X	.25 [6.4]	.25 [6.2]	.15 [3.8]	.14 [3.6]	.84 [21.4]	.25 [6.4]	.25 [6.2]							
		TN186G1*	YAES18N2	102	X	X	.32 [8.0]	.31 [7.8]	.18 [4.5]	.16 [4.1]	.87 [22.2]	.16 [4.0]	.15 [3.9]							
	8	TN188	YAES18N49	149	X	X	.46 [11.6]	.45 [11.4]	.28 [7.1]	.26 [6.6]	1.06 [26.9]	.23 [5.8]	.22 [5.7]							
	10	TN1810	YAES18N3	103	X	X	.53 [13.6]	.53 [13.4]	.40 [10.2]	.38 [9.7]	1.15 [29.1]	.27 [6.8]	.26 [6.7]							
	1/4	TN1814	YAES18N50	150	X	X	.72 [18.3]	.72 [18.3]	.23 [5.8]	.23 [5.8]	.84 [21.2]	.43 [10.9]	.43 [10.9]							
	5/16	TN18516	YAES18N4	104	X	X	.88 [22.4]	.88 [22.4]	.48 [12.1]	.48 [12.1]	.88 [22.4]	.48 [12.1]	.48 [12.1]							
3/8	TN1838	YAES18N5	105	X	X	.15 [3.9]	.15 [3.9]	.15 [3.9]	.15 [3.9]	.15 [3.9]	.15 [3.9]	.15 [3.9]								
16-14 Str. and Sol. (1.50 mm ²)	4	TN144	YAES14N52	152	X	X	.25 [6.5]	.25 [6.2]	.12 [3.0]	.11 [2.8]	.77 [19.7]	.13 [3.2]	.12 [3.1]	.03 [8]	.65 [16.5]	.24 [6.2]	.15 [3.9]	7/32" [5.6]	BLUE	Y6NCP1 [J1022NC3], Y6NCB [J1022NC3], Y10D, Y1022, MRE1022NV, MR18 (MR18 is only for stranded wire)
	6	TN146	YAES14N6	106	X	X	.32 [8.0]	.31 [7.8]	.18 [4.5]	.16 [4.1]	.87 [22.2]	.16 [4.0]	.15 [3.9]							
		TN146G1*	YAES14N7	107	X	X	.46 [11.6]	.45 [11.4]	.28 [7.1]	.26 [6.6]	1.06 [26.9]	.23 [5.8]	.22 [5.7]							
	8	TN148	YAES14N53	153	X	X	.54 [13.7]	.54 [13.7]	.51 [13.0]	.51 [13.0]	1.43 [36.3]	-	-							
	10	TN1410	YAES14N8	108	X	X	.72 [18.3]	.72 [18.3]	.31 [8.0]	.31 [8.0]	1.10 [27.9]	-	-							
	1/4	TN1414	YAES14N54	154	X	X	.84 [21.2]	.84 [21.2]	.43 [10.9]	.43 [10.9]	.84 [21.2]	.43 [10.9]	.43 [10.9]							
	1/2	TN1412	YAES14N55	155	X	-	.88 [22.4]	.88 [22.4]	.48 [12.1]	.48 [12.1]	1.10 [27.9]	-	-							
5/16	TN14516	YAES14N9	109	X	X	.88 [22.4]	.88 [22.4]	.48 [12.1]	.48 [12.1]	1.06 [26.9]	.23 [5.8]	.22 [5.7]								
3/8	TN1438	YAES14N10	110	X	-	.15 [3.9]	.15 [3.9]	.15 [3.9]	.15 [3.9]	1.14 [29.1]	.27 [6.8]	.26 [6.6]								
12-10 Str. and Sol. (4.00 mm ²)	6	TN106	YAES10N11	111	X	X	.38 [9.6]	.37 [9.4]	.15 [3.8]	.14 [3.6]	1.04 [26.5]	.19 [4.8]	.18 [4.7]	.04 [1.0]	.86 [21.8]	.28 [7.1]	.21 [5.3]	11/32" [8.7]	YELLOW	
	8	TN108	YAES10N56	156	X	X	.28 [7.1]	.26 [6.6]	.28 [7.1]	.26 [6.6]	1.24 [31.4]	.27 [6.8]	.26 [6.7]							
		TN1010	YAES10N12	112	X	X	.54 [13.6]	.53 [13.4]	.34 [8.6]	.32 [8.1]	1.29 [32.7]	.29 [7.4]	.29 [7.3]							
	10	TN1010	YAES10N12	112	X	X	.72 [18.3]	.71 [18.0]	.54 [13.7]	.51 [13.0]	1.41 [35.7]	.36 [9.1]	.36 [9.0]							
	1/4	TN1014	YAES10N57	157	X	X	.84 [21.2]	.84 [21.2]	.43 [10.9]	.43 [10.9]	1.00 [25.4]	.42 [10.8]	.42 [10.8]							
	5/16	TN10516	YAES10N13	113	X	X	1.05 [26.7]	1.05 [26.7]	.47 [12.0]	.47 [12.0]	1.05 [26.7]	.47 [12.0]	.47 [12.0]							
	3/8	TN1038	YAES10N14	114	X	-														
1/2	TN1012*	YAES10N58	158	X	-															



NOTES:

1. TERMINAL: TIN PLATED COPPER.
2. INSULATION: NYLON.
3. DIMENSIONS IN BRACKETS [] ARE IN MILLIMETERS AND ARE FOR REFERENCE ONLY.
4. DIE SETS ARE LISTED IN BRACKETS [] AFTER THEIR RESPECTIVE TOOLS.
5. UL LISTED & CSA CERTIFIED WIRE CONNECTORS PER UL486A/B (FILE E9498) & CSA C22.2 NO.65 REQUIREMENTS (FILE 42862)
6. DISCONTINUED TOOLS: Y6NCP, Y10MRS, Y10MRPA, INSY10D, MR883
CONTACT TECH SERVICE FOR INFORMATION ABOUT APPROVED APPLICATIONS (1-800-451-4956)
7. WIRE CONNECTOR:
300V MAXIMUM (600V MAXIMUM WHEN CRIMPED WITH MR18)
TEMPERATURE RATING OF INSULATING MATERIAL 105°C
FLAME RATING: UL746C GLOW WIRE TEST
8. MEETS REQUIREMENTS OF SAE-AS7928 (MAIN OFFICE CAGE CODE NUMBER: 1NJK8)
9. ITEMS WITH CATALOG NUMBERS FOLLOWED BY ASTERISKS (*) ARE NOT UL LISTED OR CSA CERTIFIED
10. ADD "NK" SUFFIX FOR NICKEL PLATED HYLUGS.
11. ADD "SV" SUFFIX FOR SILVER PLATED HYLUGS.



TO ORDER BURNDY® PRODUCTS CALL		INSULUG™	
UNITED STATES 1-800-346-4175 (LONDONDERRY, NH)		ITEM NO: N/A	
CANADA: 1-800-361-6975 (QUEBEC) 1-800-387-6487 (ALL OTHER PROVINCES)		CAT. NO: TYPE TN & YAES	
FOR PRODUCT INFO: http://www.burndy.com		DRAWN BY: K.BALAJI 9/25/2018	
		CHECKER: S.VENKATESAN 9/25/2018	
		DSN APRVL: K.CASTONGUAY 12/5/2018	
		MFG APRVL: --	
		QA APRVL: B.POST 12/5/2018	
		MKT APRVL: M.BAILLY 12/5/2018	
		PROD FAM: --	
		PROJECT #: --	
		DOCUMENT TYPE: SALES	
		REL LEVEL: Released	
		DRAWING NO	
		50094155	
		SHEET 1 OF 1	
		REV	
		D	